



ALUMINIUM EXTRUSIONS

FULL PRODUCT

PROFILE
CATALOGUE

WWW.RFM.CO.ZA





**COVERED
IN OUR
CATALOGUE**

Blinds Industry.

Truck Bodies
Industry.

Cold Rooms
Industry.

Heat Pump
Industry.

Engineering
Profiles Industry.

We Show Our Metal

Grow Your
Business
with Us!




» About Us


RF Metals is an Aluminium profile stockist that was established in Cape Town, with over 20 years of experience in the industry. It had grown well with it's ethos of a customer orientated culture and opened another branch in Johannesburg in 2021 to bring its quality products and service offering to Gauteng. RF Metals stock, amongst others both Wispeco and Hulamin's local quality aluminium extrusions and all branches are proud CDP's (Crealco Distribution Partners). All CDP's are linked to the Crealco CDP supply website page.

WE RETAIL NATIONALLY



Contact Us

 +27 21 5510125 CPT

 +27 87 164 1888 JHB

 www.rfm.co.za

 @rfmetals

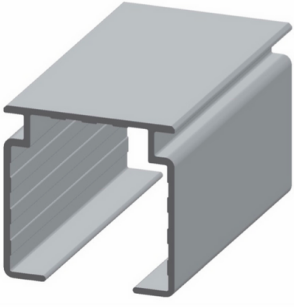
So what are you waiting for,
entrust your business to us.



BLINDS INDUSTRY

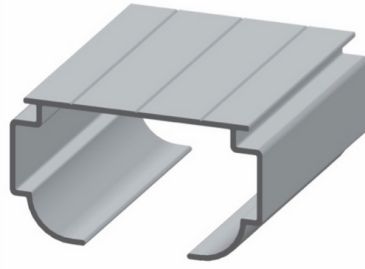
PRODUCT PROFILES

3 D



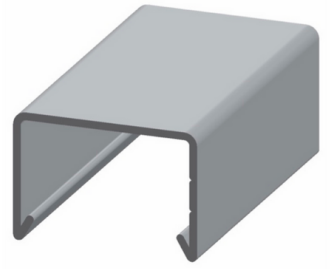
CODE	DESCRIPTION	LENGTH
VZZ-27649-60	BLIND TILT TRACK-HEAD RAIL	6.000

3 D



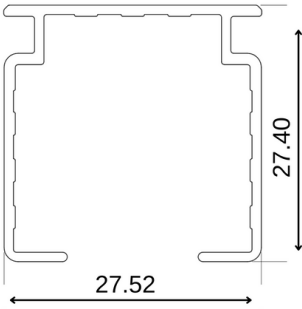
CODE	DESCRIPTION	LENGTH
VZZ-32434-60	DIE 32434 LIGHT EURO TRACK	6.000

3 D

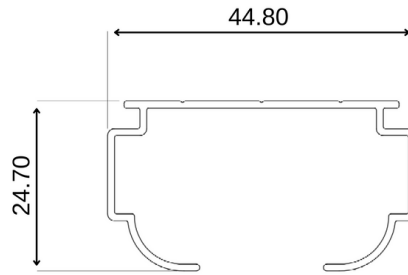


CODE	DESCRIPTION	LENGTH
VZZ-32462-60	VENETIAN HEADRAIL	6.000

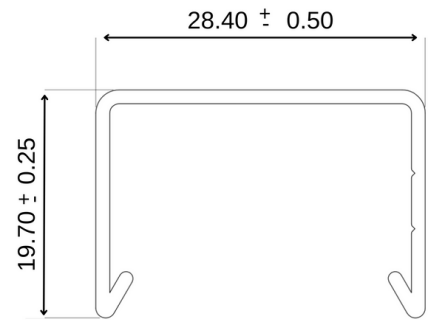
2 D



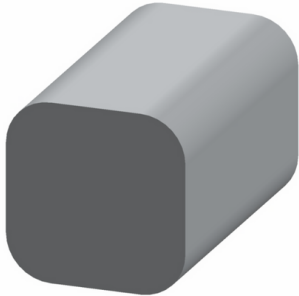
2 D



2 D

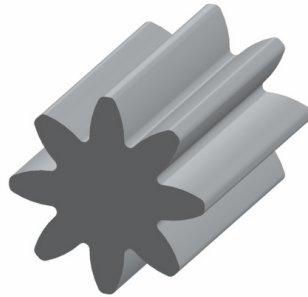


3 D



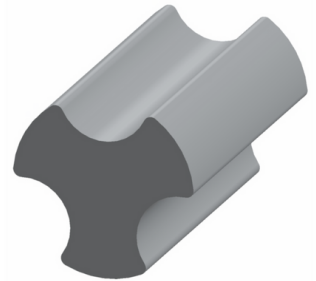
CODE	DESCRIPTION	LENGTH
VZZ-42665-60	6MM SQUARE BAR TILT ROD	6.000

3 D



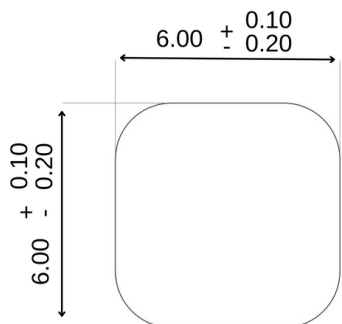
CODE	DESCRIPTION	LENGTH
VZZ-30800-60	8 STAR TILT ROD	6.000

3 D

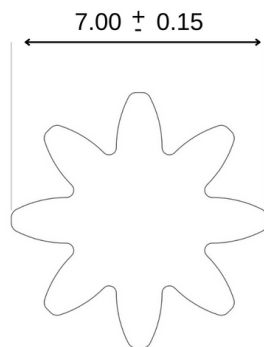


CODE	DESCRIPTION	LENGTH
VZZ-41430-60	3 STAR TILT ROD	6.000

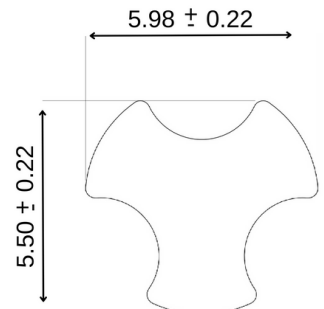
2 D



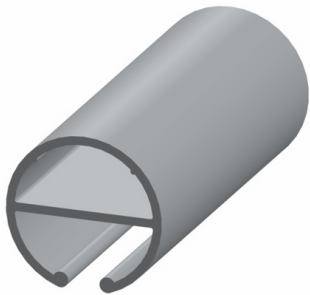
2 D



2 D

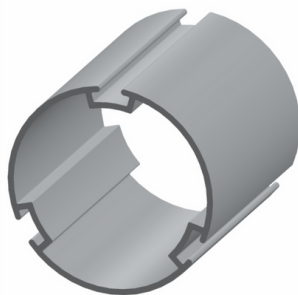


3 D



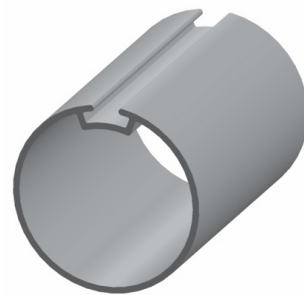
CODE	DESCRIPTION	LENGTH
VAT-56091-60	DIE 56091 BOTTOM SECTION	6.000

3 D



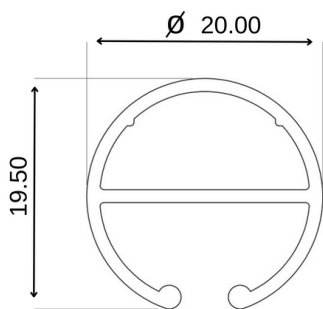
CODE	DESCRIPTION	LENGTH
VAT-56678-60	DIE 56678- 45MM ROLLER TUBE	6.000

3 D

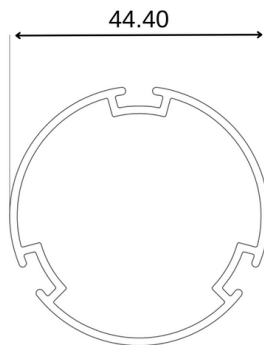


CODE	DESCRIPTION	LENGTH
VAT-56679-60	32MM ROLLER TUBE	6.000

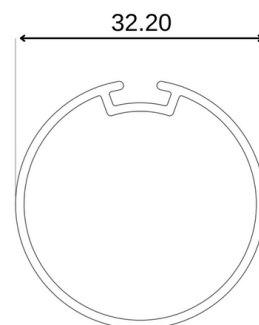
2 D



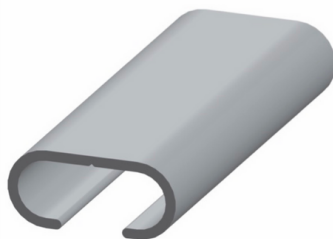
2 D



2 D

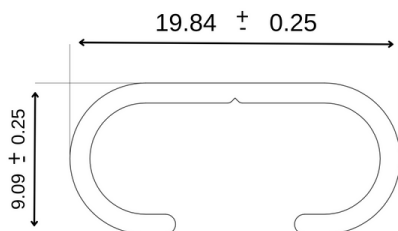


3 D



CODE	DESCRIPTION	LENGTH
VZZ-32463-60	C-TRACK	6.000

2 D

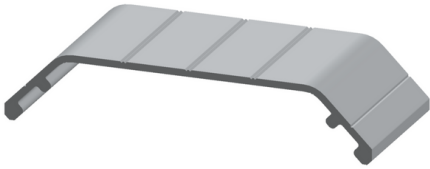




TRUCK BODIES INDUSTRY

PRODUCT PROFILES

3 D



CODE
VEC-31472-80

DESCRIPTION
DIE 31472
FRONT COVE

3 D



CODE
VEC-31473-80

DESCRIPTION
DIE 31473
70X70 COVING

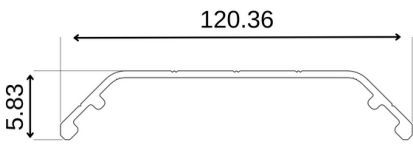
3 D



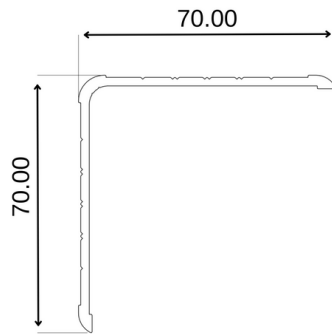
CODE
VEC-31474-80

DESCRIPTION
DIE 31473
120X70 COVE

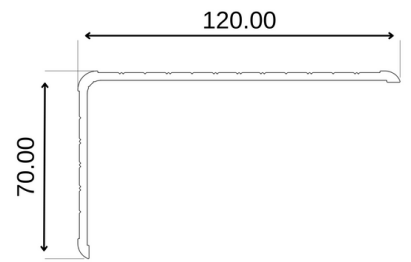
2 D



2 D



2 D



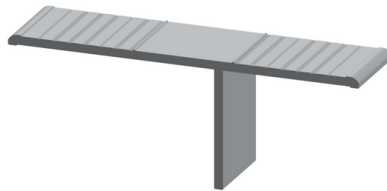
3 D



CODE
VEC-31888-80

DESCRIPTION
DIE 31888
160X70 COVE

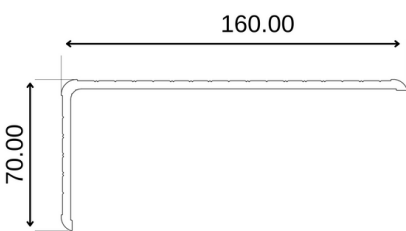
3 D



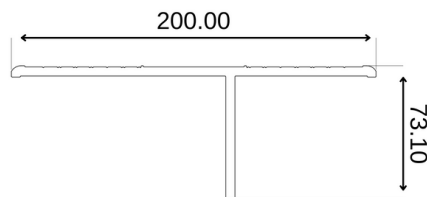
CODE
VEC-33518-65

DESCRIPTION
DIE W33518A
BIG COVE

2 D



2 D

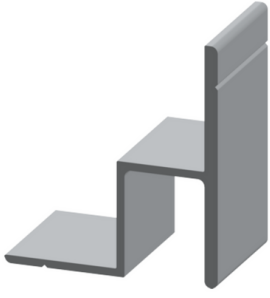




COLD ROOMS INDUSTRY

PRODUCT PROFILES

3 D



CODE	DESCRIPTION	LENGTH
VZZ-23330	DIE 23330 COLD ROOM DOOR BOTTOM MILL	6.000

3 D



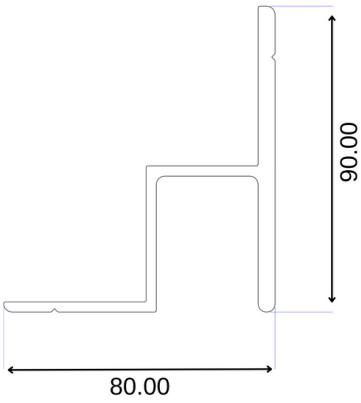
CODE	DESCRIPTION	LENGTH
VZZ-29707	ECONOGLIDE SIDE TRIM	6.250

3 D

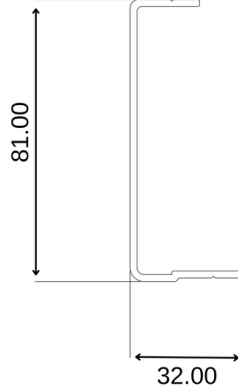


CODE	DESCRIPTION	LENGTH
VZZ-29708	DIE 29708 DOOR TRACK	6.000

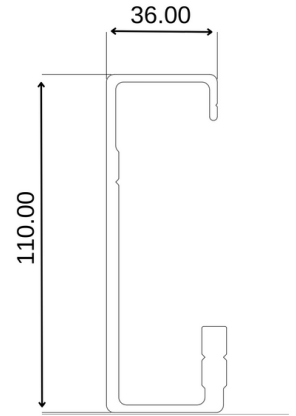
2 D



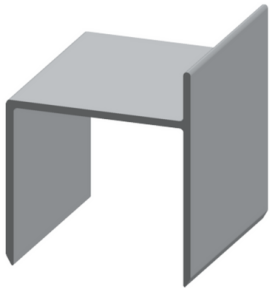
2 D



2 D

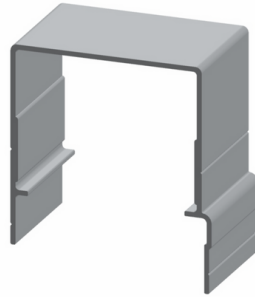


3 D



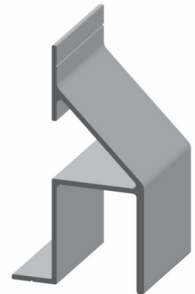
CODE	DESCRIPTION	LENGTH
VZZ-32574	DIE 32574 SMALL C	6.000

3 D



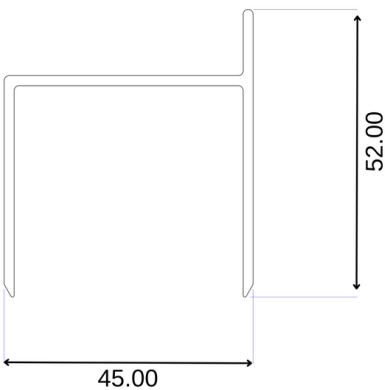
CODE	DESCRIPTION	LENGTH
VAP-29705	DIE 29705 DOOR HEADER	6.000

3 D

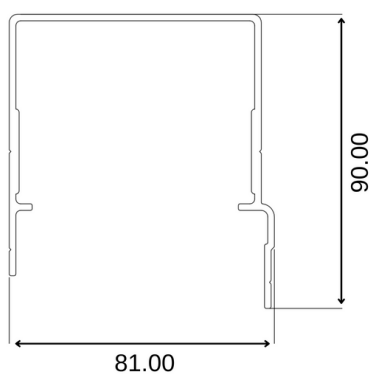


CODE	DESCRIPTION	LENGTH
VZZ-29706	DIE 29706 ECONOGLIDE DOOR BOTTOM GUIDE M	6.000

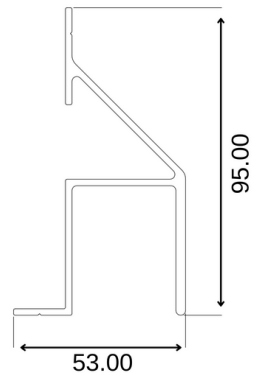
2 D



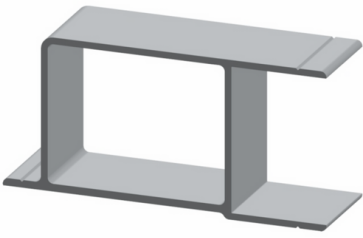
2 D



2 D

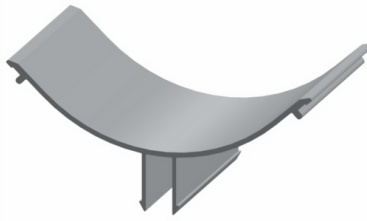


3 D



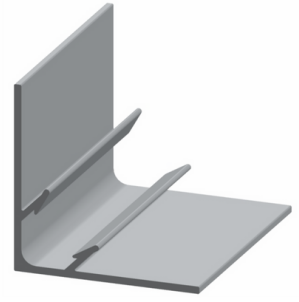
CODE	DESCRIPTION	LENGTH
VZZ-42958	DIE 42958 COLD ROOM HEADER	5.000

3 D



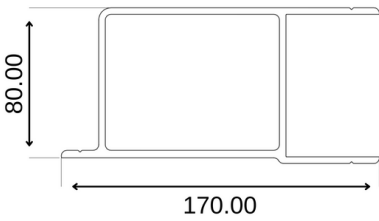
CODE	DESCRIPTION	LENGTH
VZZ-11746	DIE 11746 COVE MILL	6.000

3 D

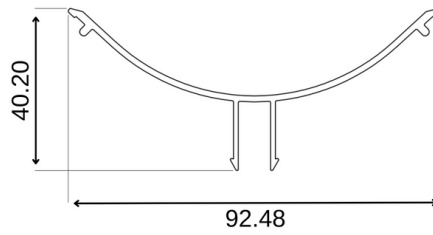


CODE	DESCRIPTION	LENGTH
VZZ-22483	DIE 22483 COVE CLIP MILL	6.000

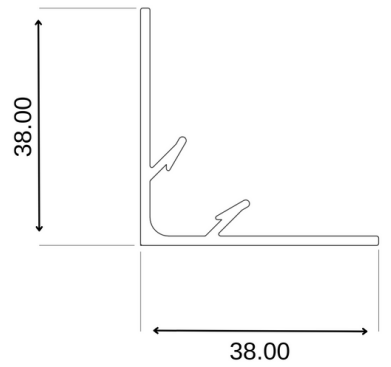
2 D



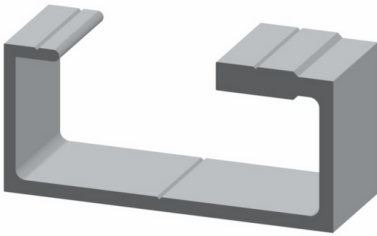
2 D



2 D

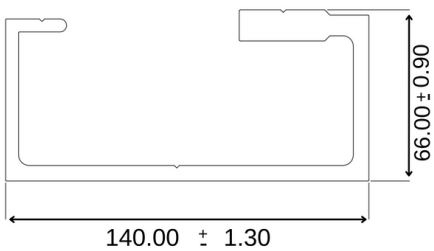


3 D



CODE	DESCRIPTION	LENGTH
VZZ-25458	DIE 25458 ECONOLITE DOOR TRACK MILL	6.000

2 D

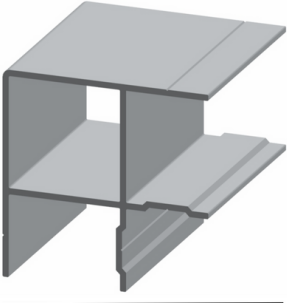




HEAT PUMP INDUSTRY

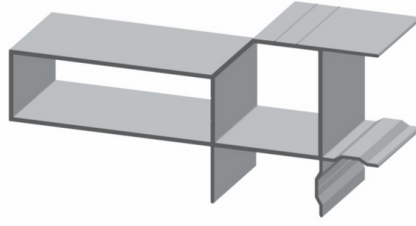
PRODUCT PROFILES

3 D



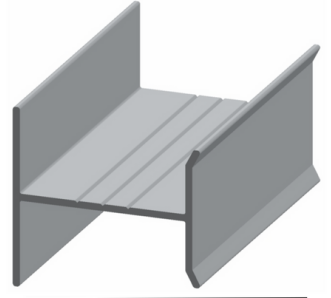
CODE
VHP-54000 DESCRIPTION
DIE 54000
25MM POST

3 D



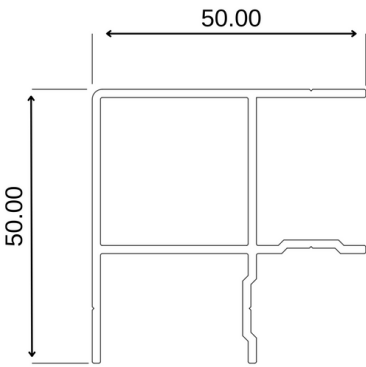
CODE
VHP-55346 DESCRIPTION
DIE 55346
45MM BASE
SECTION

3 D

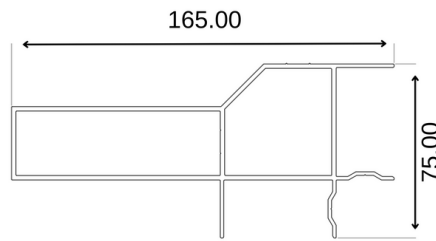


CODE
VHP-70846 DESCRIPTION
DIE 70846
H SECTION HEAT
PUMP

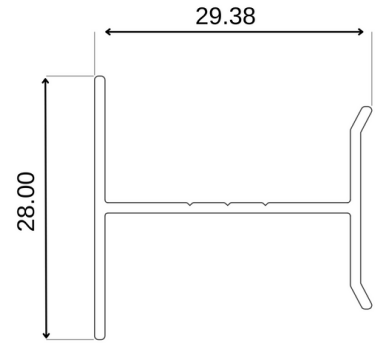
2 D



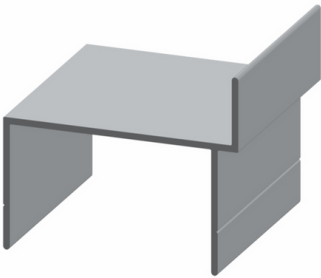
2 D



2 D

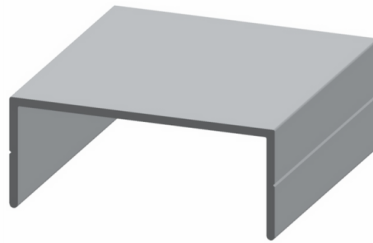


3 D



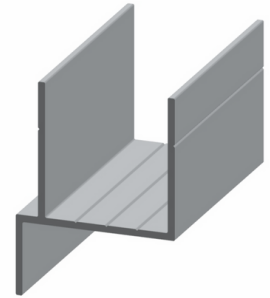
CODE
VHP-28338 DESCRIPTION
DIE 28338
45MM DOOR JAMBS

3 D



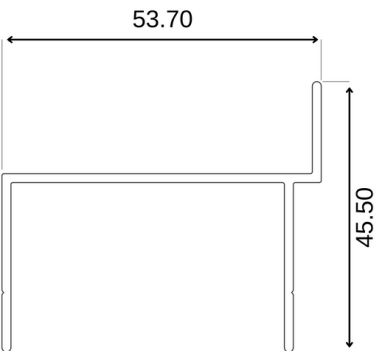
CODE
VHP-28357 DESCRIPTION
DIE 28357
D/CHANNEL

3 D

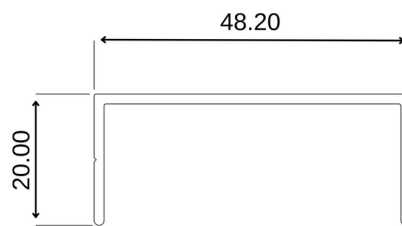


CODE
VHP-32409 DESCRIPTION
DIE 32409
25MM DOOR FRAME

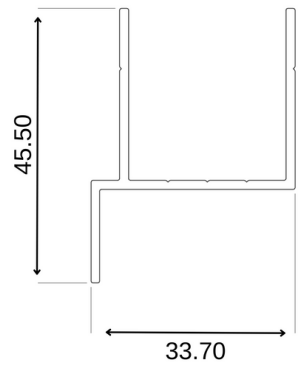
2 D



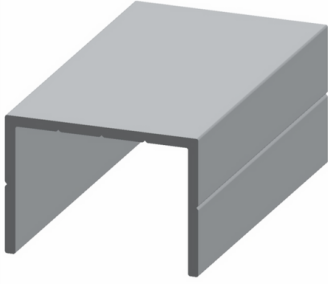
2 D



2 D



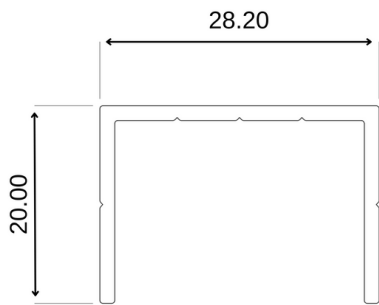
3 D



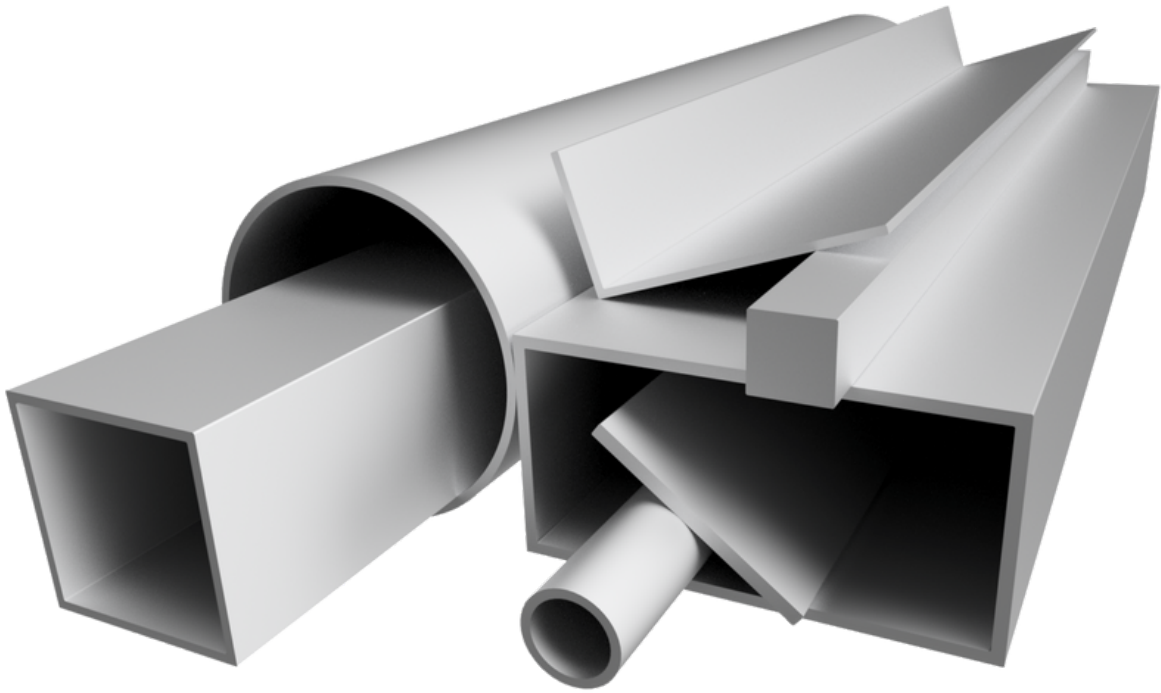
CODE
VHP-31410

DESCRIPTION
DIE 31410
25MM DOOR
CHANNEL

2 D



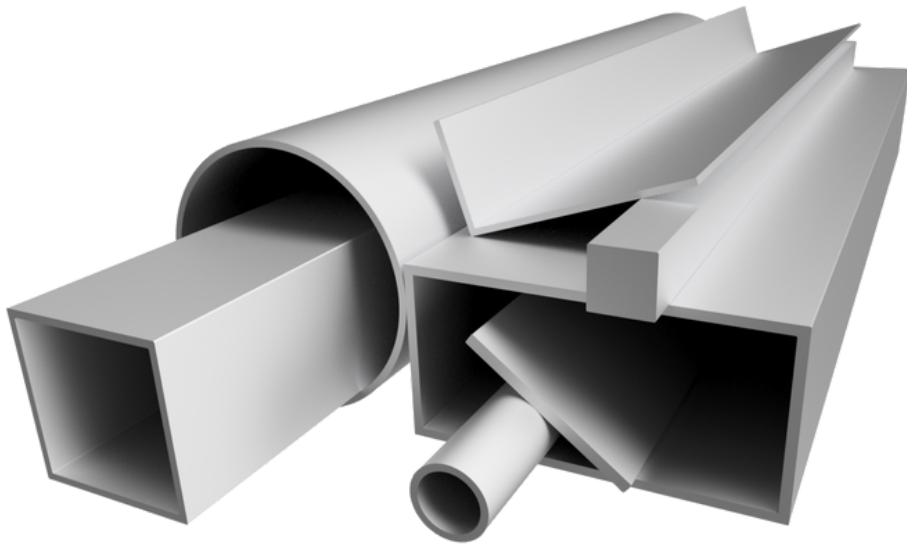
RFM
ALUMINIUM EXTRUSIONS



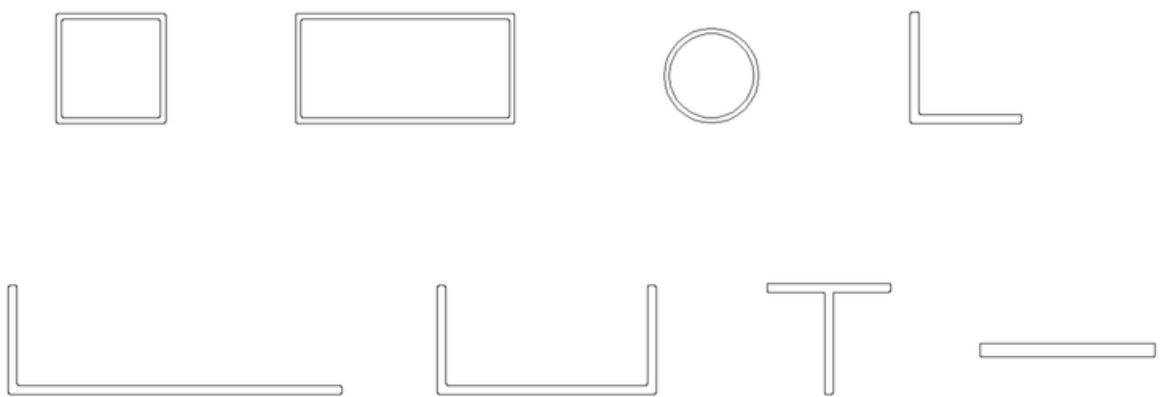
ENGINEERING PROFILES INDUSTRY

PRODUCT PROFILES

3D



2D



EQUAL ANGLES

Alt Code	Description	A	B	T
UAE-11193-60	Eq Angle 12x1.5	12	12	1.5
UAE-70143-60	Eq Angle 15x1.5	15	15	1.5
UAE-10386-60	Eq Angle 19x1.6	19	19	1.6
UAE-10968-60	Eq Angle 25x1.6	25	25	1.6
UAE-20422-60	Eq Angle 38x2	38	38	2
UAE-20423-60	Eq Angle 50x2	50	50	2
UAE-29351-60	Eq Angle 76x2	76	76	2

UNEQUAL ANGLES

Alt Code	Description	A	B	T
UAU-20699-60	Uneq Angle 25x12.5x1.5	25	12.5	1.5
UAU-11165-60	Uneq Angle 50x25x1.5	50	25	1.5
UAU-70304-60	Uneq Angle 76x22x2	76	22	2
UAU-33912-60	Uneq Angle 76x38x2	76	38	2

FLAT BARS

Alt Code	Description	A	B	T
UBF-0034H-60	Flat Bar 19x4.77	19	4.77	
UBF-28934-60	Flat Bar 25x1.5	25	1.5	
UBF-28905-60	Flat Bar 38x1.5	38	1.5	
UBF-18501-60	Flat Bar 50.8x2	50.8	2	
UBF-26375-60	Flat Bar 75x1.3 (Skirting)	75	1.3	

SQUARE BARS

Alt Code	Description	A		
UBS-22051-60	Square Bar 12.7	12.7		

CHANNELS

Alt Code	Description	A	B	T
UCU-70438-60	Channel 9.52x9.52x1.6	9.52	9.52	1.6
UCU-10444-60	Channel 12.7x12.7x2	12.7	12.7	2
UCU-20042-60	Channel 15.88x15.88x1.68	15.88	15.88	1.68
UCU-11293-60	Channel 19.2x19.2x1.2	19.2	19.2	1.2
UCU-21296-60	Channel 21x21x1.2	21	21	1.2
UCU-18654-60	Channel 23x23x1.25	23	23	1.25
UCU-22209-60	Channel 80.5x21x1.5	80.5	21	1.5
VZZ-32560-60	Channel 44x28x1.8	44	28	1.8
MSN-23224-65	Channel 44.4x19x1.6 (Compensating)	44.4	19	1.6
VZZ-29118-60	Channel 80x35x2	80	35	2

RECTANGULAR TUBING

Alt Code	Description	A	B	T
UTE-11922-60	Rect Tube 18x12x1.2	18	12	1.2
UTE-53111-60	Rect Tube 50x25x2	50	25	2
UTE-11493-60	Rect Tube 76x38x2	76	38	2
UTE-42194-60	Rect Tube 98x18x2	98	18	2
UTE-42534-60	Rect Tube 100x38x2 (Radiused)	100	38	2
UTE-42533-60	Rect Tube 150x38x2 (Radiused)	150	38	2
UTE-55209-72	Rect Tube 150x50x2	150	50	2

SQUARE TUBING

Alt Code	Description	A	T	
UTS-42179-60	Square Tube 20x1.5	20	1.5	
UTS-10628-60	Square Tube 25x2	25	2	
UTS-42886-60	Square Tube 30x2	30	2	
UTS-00041-60	Square Tube 38x2 (Radiused)	38	2	
UTS-42758-60	Square Tube 50x2	50	2	
UTS-11517-60	Square Tube 76x2	76	2	
UTS-55210-60	Square Tube 100x2	100	2	

ROUND TUBING

Alt Code	Description	OD	T	
UTR-42678-60	Round Tube 19x1.2	19	1.2	
UTR-H9624-60	Round Tube 22x1.2	22	1.2	
UTR-H9613-60	Round Tube 25x1.4	25	1.4	
UTR-10635-60	Round Tube 38x1.6	38	1.6	

